

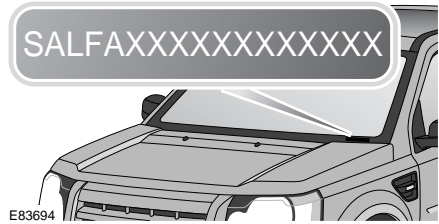
# Vehicle identification

## VEHICLE IDENTIFICATION PLATE



The Vehicle Identification Number (VIN) is shown on a label attached to the driver's door pillar. The VIN on the label should match the VIN recorded in the Passport to Service, and the VIN visible through the front windshield.

## VEHICLE IDENTIFICATION NUMBER (VIN)



As a deterrent to thieves, and to assist the Police, the VIN is stamped on a plate which is visible through the lowest part of the left side of the windshield.

**Note:** If you need to communicate with a Land Rover Dealer, you may be asked to quote the VIN number.